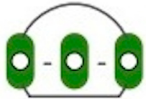


# PHARMASONIC SYS-700 Dual ADSR 705 build notes

## General info:

Because of the lack of space, there is no reference for the transistors. You have to rely on the parts symbol.

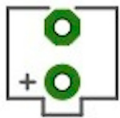
This symbol is for 2SC945 transistors (unless otherwise noted):



This one is for 2SA733's:

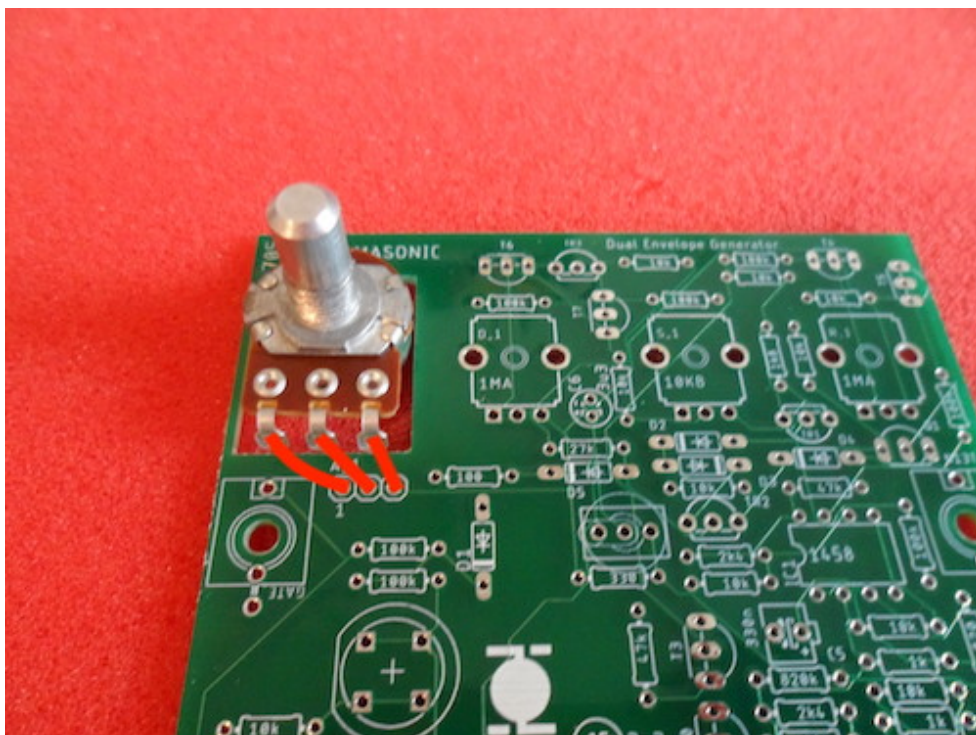


Also, this symbol is for Tantalum caps:



## 16mm pots wiring

There are two 16mm potentiometers that need to be wired to the PCB. Here is how it should be done:



That's it !